

TEN THINGS TO LOVE ABOUT STONE MILLS HOUSE

1. HISTORY

In an area imbued with history, this property stands out... Its association with the very early (1812) Van Alstine mills, with Sir John A. MacDonald, and with the early development of Prince Edward County has created a special sense of history here in this gracious house overlooking the Adolphus Reach. You can read about its significance in “The Settler’s Dream”.

2. ARCHITECTURAL INTEGRITY

The 1990 renovation of the original 1812 stone house, and the substantial addition designed by architect Court Noxon, are extremely sensitive. Much care was taken to match the detail in the new building to the original trim, to create a gentle transition from the early house to the later one, and to maintain an integrated façade for both sides of the house.

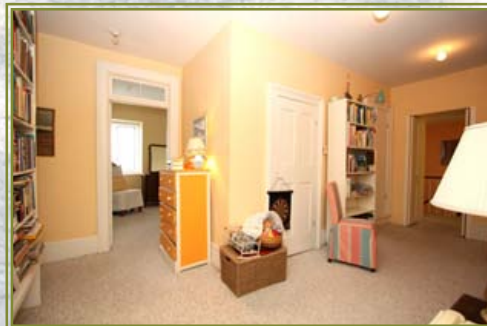
3. THE CARRIAGE HOUSE

Calling all artists! A perfect opportunity to create a north-facing, waterfront studio with inspirational views!



4. THE CHILDREN’S WING

The second level of Stone Mills House has been thoughtfully designed to separate the spacious master suite from the wing which would be ideal for children or for guests. This area features its own sitting room/library, and a staircase to the attic and belvedere. A four-piece bathroom completes this suite of rooms.



5. RADIANT IN-FLOOR HEATING

The perfect means of heating the main floor, radiant heating is even, can be controlled on a room-to-room basis, and as a result, is remarkably economical.

6. PRIVACY

Drive past the carriage house and into the courtyard, and suddenly you have arrived in a special, private place...

Sheltered by the escarpment behind and the mill buildings on one flank, you'll find yourself at once protected and still open to spectacular views over the reach.



7. MASTER SUITE

Currently divided into separate sitting/sleeping/working areas, this generous space has excellent potential to be turned into exactly the kind of suite you need. It enjoys some of the best views the house offers of the waterfront and the grounds.

8. THE KITCHEN

Bring the kids! Designed as the heart of this house, this large space has several working spaces, a breakfast area, a walk-out directly to the waterside terrace, and remarkable counter space! The stove provides a cozy focus, and the adjacent family room is the perfect spot in which to curl up with a book. Don't miss the outstanding deep window sills which accommodate the three foot-thick stone walls.



9. THE BELVEDERE

Who hasn't noticed it from the ferry? Stretch a hammock up there, and watch the sailboats drift by...

10. ONCE-IN-A-LIFETIME

Every now and then, an opportunity such as this one presents itself: your chance to be the steward of this significant property: **STONE MILLS HOUSE.**