



Stone Mills House  
Prince Edward County

### MAIN LEVEL

\*Approx. raw sq. ft.: 2,059



**Sam Simone**

Sales Representative

samsimone@chestnutpark.com

www.samsimone.com

43 Main Street  
Picton, Ontario

**Tel:** 613-471-1708

**Toll free:** 877-471-1708

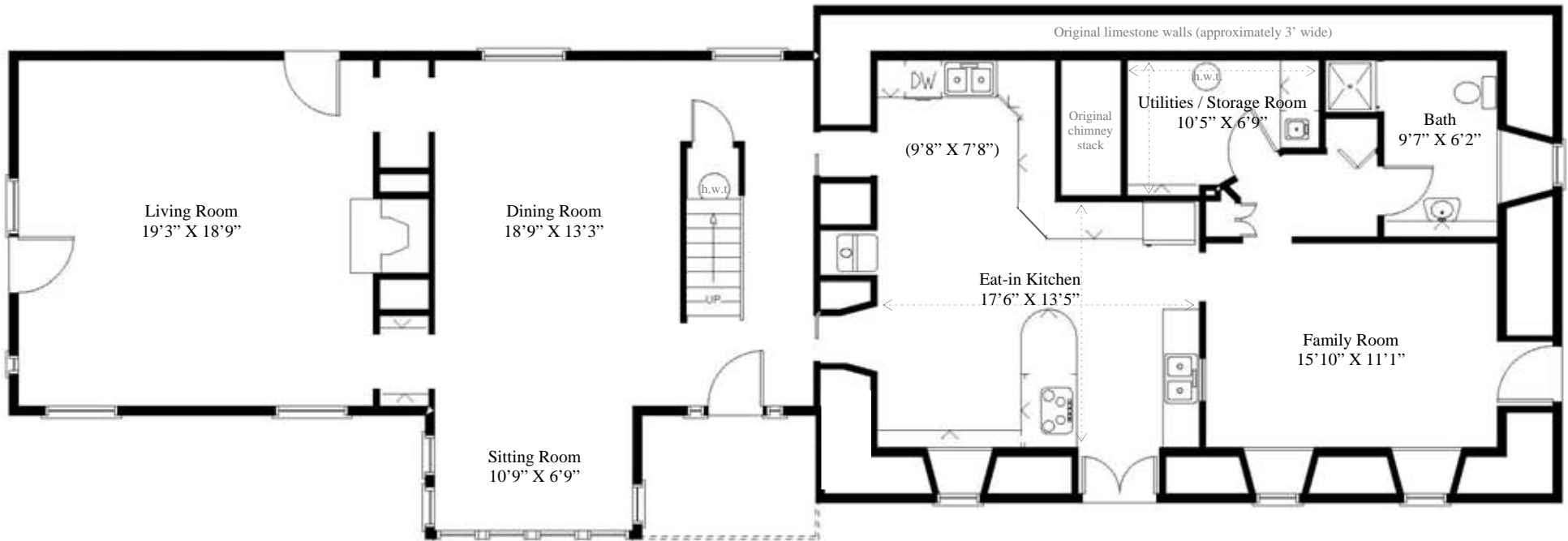


**Laurie Gruer**

Sales Representative

lgruer@chestnutpark.com

www.lauriegruer.com



Note: This floor plan is an artistic rendering only. All dimensions are approximate and are based on the outermost walls of the room unless otherwise noted. Defined Lines and the listing agent make no representation or warranty as to this rendering's accuracy and no measurements or dimensions should be relied upon without independent verification. Raw sqft. is based on the overall exterior dimensions.

**DL**  
**Defined Lines**  
Plan for the Sale™  
www.definedlines.ca

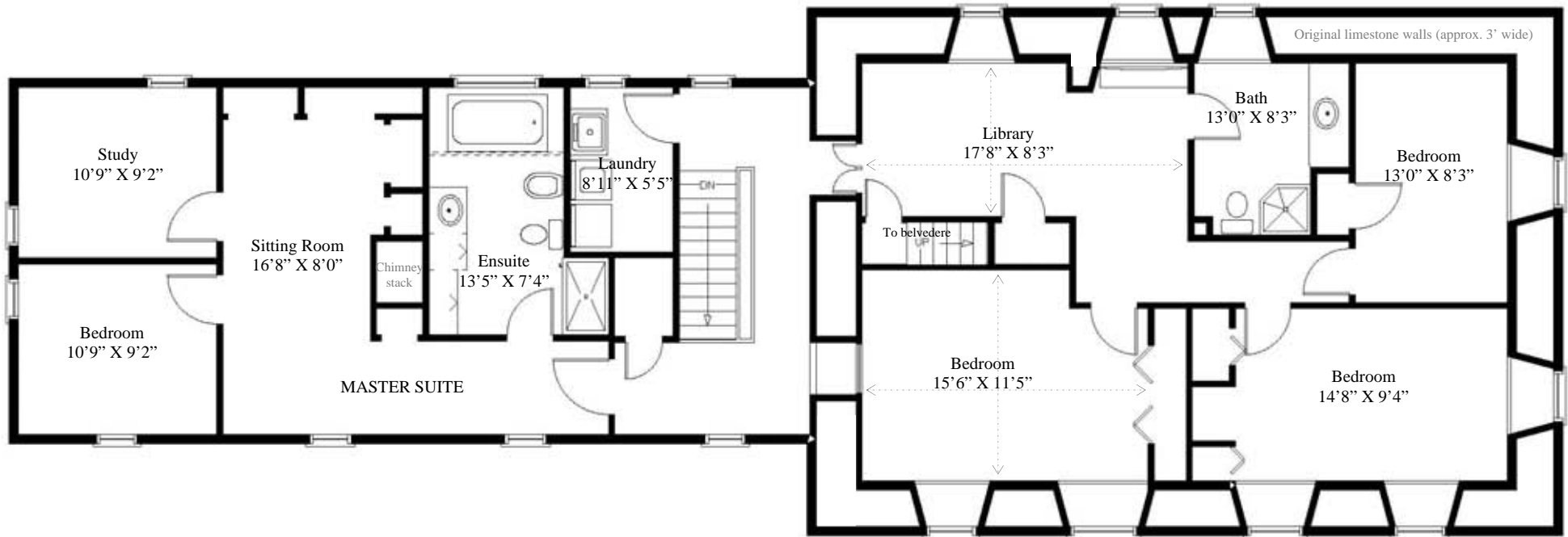
(Scroll to view other levels)

Stone Mills House  
Prince Edward County



**UPPER LEVEL**

\*Approx. raw sq. ft.: 1,981



Listing Representatives:

**Sam Simone:** E-mail: [samsimone@chestnutpark.com](mailto:samsimone@chestnutpark.com) Website: [www.samsimone.com](http://www.samsimone.com)

**Laurie Gruer:** E-mail: [lgruer@chestnutpark.com](mailto:lgruer@chestnutpark.com) Website: [www.lauriegruer.com](http://www.lauriegruer.com)

Note: This floor plan is an artistic rendering only. All dimensions are approximate and are based on the outermost walls of the room unless otherwise noted. Defined Lines and the listing agent make no representation or warranty as to this rendering's accuracy and no measurements or dimensions should be relied upon without independent verification. Raw sqft. is based on the overall exterior dimensions.



[www.definedlines.ca](http://www.definedlines.ca)

(Scroll to view other levels)